

Do not use with water that is microbiologically unsafe or of unknown quality without adequate disinfection before or after the system. Systems certified for cyst reduction may be used on disinfected waters that may contain filterable cysts.



REPLACEMENT

The HF-R03-R-Carbon filter has been tested and certified by NSF International in model HF-RO against NSF/ANSI 42 for material safety only.

The HF-R03-R-AquaPure Post Filter has been tested and certified by NSF International against NSF/ANSI Standards 42 and 53 in model HF-RO for the reduction claims specified on the Performance Data Sheet and at www.nsf.org.

- Conforms to NSF/ANSI Standards 42 & 53 for substances listed on the performance data sheet. See performance data sheet for individual contaminants and reduction performance at: www.hahnfiltration.com
- Rated capacity: 6 Months

Thank you for choosing HAHN Filtration!



Manufactured by Sink Warehouse, LP
4601 Spicewood Springs Rd, Suite 1-100, Austin, Texas 78759
(888) 245-3114 • www.hahnfiltration.com

HF-R03-R_INST_201403

HAHN[™]
FILTRATION



CTO and AquaPure[™] Filter
Replacement Instructions

MODEL HF-R03-R for use with HF-RO

1. Shut off the cold water valve under the sink. Release the pressure from the system by turning on the filtration system faucet. Once there is no longer any water coming from the filtration system faucet, you will be ready to change the filters.
2. Unpack the replacement filter cartridges from the box & remove the plastic wrap from the filters. You will notice that each filter cartridge is color coded to match the cartridge sump on the filtration system.
3. Remove each cartridge sump from the filtration system by rotating the sump towards the left side & pull down to detach. (Figure A)
4. Hold the cartridge sump over the sink, separate the two pieces of the sump by turning the bottom portion of the sump in a clockwise direction. Pour any excess water down the drain. Pull down on each cartridge to disconnect the filter cartridge from the top half of the sump. (Figure B)

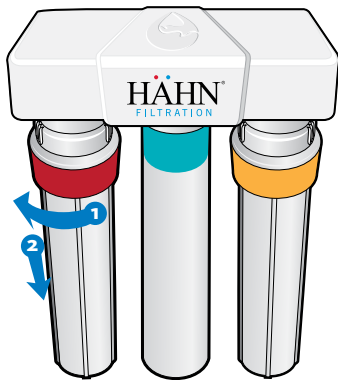


FIGURE A

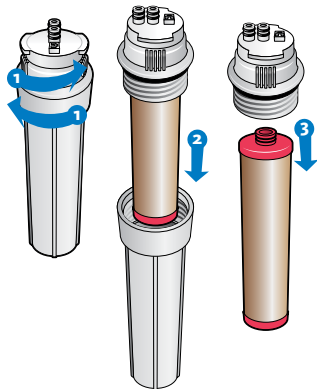


FIGURE B

5. Insert & connect the new filter cartridge to the top half of the sump then reattach the bottom of the sump to the top half by turning & tightening counterclockwise. (Figure C)

6. Reattach sump to the bottom of the top housing by making sure all connection points are aligned, pushing the top of the sump up & into the bottom of the top housing & turning the sump towards the right. Ensure that the sump is fully attached and locked in. Red on left, yellow on right. (Figure D)

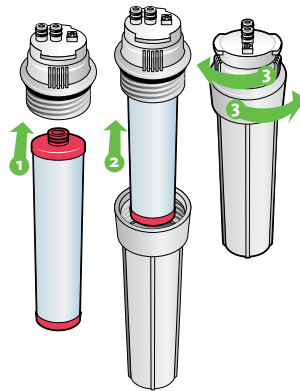


FIGURE C

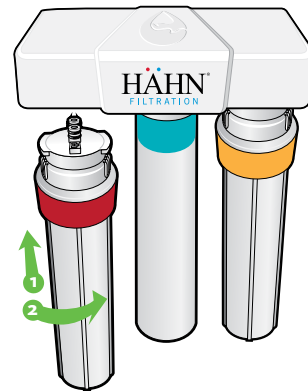


FIGURE D

7. Once both filter cartridges have been changed and sumps are securely attached to the top housing, slowly turn the cold water valve back on, confirm the RO faucet is closed & allow the tank to completely fill (this may take around 2 hours).
8. Once the tank has completely filled, inspect for leaks.
9. If there are no leaks, flush the filter cartridges by opening up the RO faucet and allowing the water to run through the filters until there is no longer any pressure coming out of the RO faucet.
10. Close the RO faucet, allow 2 hours for the pressure to build back up in the system and your RO system is ready to use.